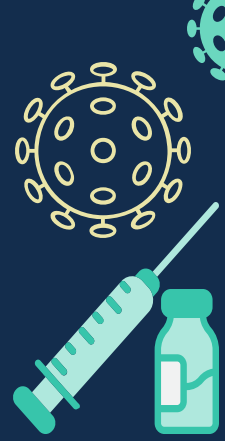


Who is Eligible for a COVID-19 Pfizer Booster Dose?



- Only for those who previously received Pfizer's COVID-19 vaccine
- Must be at least six months after having the second dose of the Pfizer vaccine

Groups that Should Receive a Booster:



People aged 65 years and older

Risk of severe illness from COVID-19 increases with age. Vaccine protection against COVID-19 decreases over time, especially for older adults.



Residents aged 18 years and older in long-term care settings

Residents live closely together with increased risk of infection and severe illness from COVID-19



People aged 50-64 years with underlying medical conditions

Risk of severe illness from COVID-19 increases with age, and with underlying medical conditions (same conditions as below)

Groups that May Receive a Booster:

"may" after considering individual risks and benefits



People aged 18-49 years with underlying medical conditions

- Cancer
- Chronic kidney disease
- Chronic lung diseases
- Dementia or other neurological conditions
- Diabetes (type 1 or type 2)
- Down syndrome
- Heart conditions
- HIV infection
- Immunocompromised state
- Liver disease
- Overweight and obesity
- Pregnancy
- Sickle cell disease or thalassemia
- Smoking, current or former
- Solid-organ or blood stem cell transplant
- Stroke or cerebrovascular disease
- Substance use disorders



People aged 18-64 years at increased risk for COVID-19 exposure and transmission due to occupational or institutional setting

Occupations:

- First responders (healthcare workers, firefighters, police, congregate care staff facilities)
- Education staff (teachers, support staff, daycare workers)
- Food and agriculture workers
- Manufacturing workers
- Corrections workers
- U.S. Postal Service workers
- Public transit workers
- Grocery store workers

*CDC could update this list in the future